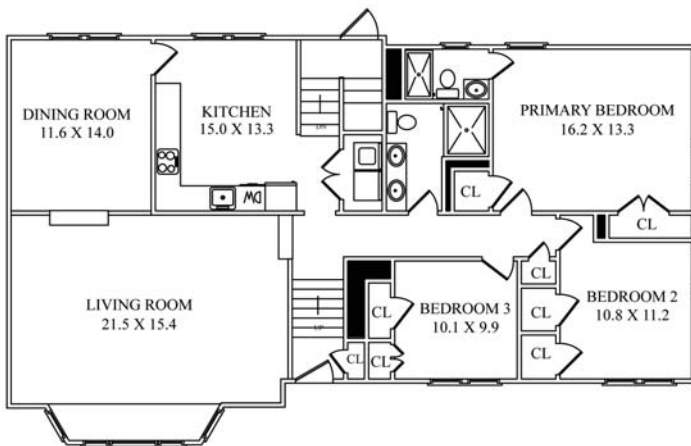
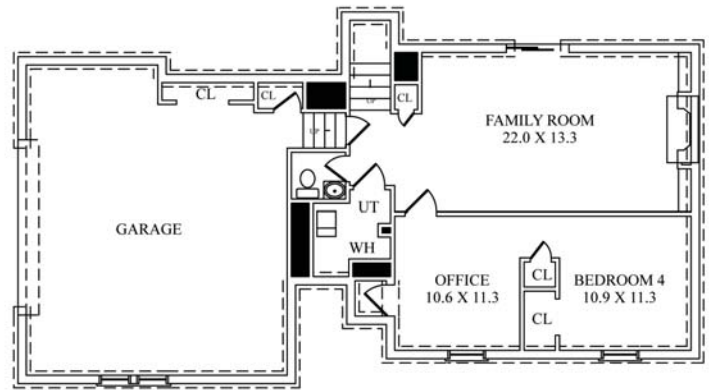


Floor Plan - 500 Summit Road, Mountainside NJ

.333 ACRES* | 4 BR | 2.1 BA | 2 Car Garage



FIRST FLOOR



LOWER LEVEL

KELLY O'KELLY

SALES ASSOCIATE

KIM CANNON & CO

c 973.420.0779

kelly.okelly@sothebysrealty.com | kelly.kimcannonteam.com

309 Springfield Avenue, Summit, NJ 07901 | o 908.273.8808 | sothebysrealty.com



*All measurements are approximate. All information deemed reliable but not guaranteed. Plans provided for illustration purposes only and are not to scale. Each Franchise Is Independently Owned And Operated.

Prominent
Properties | Sotheby's
INTERNATIONAL REALTY