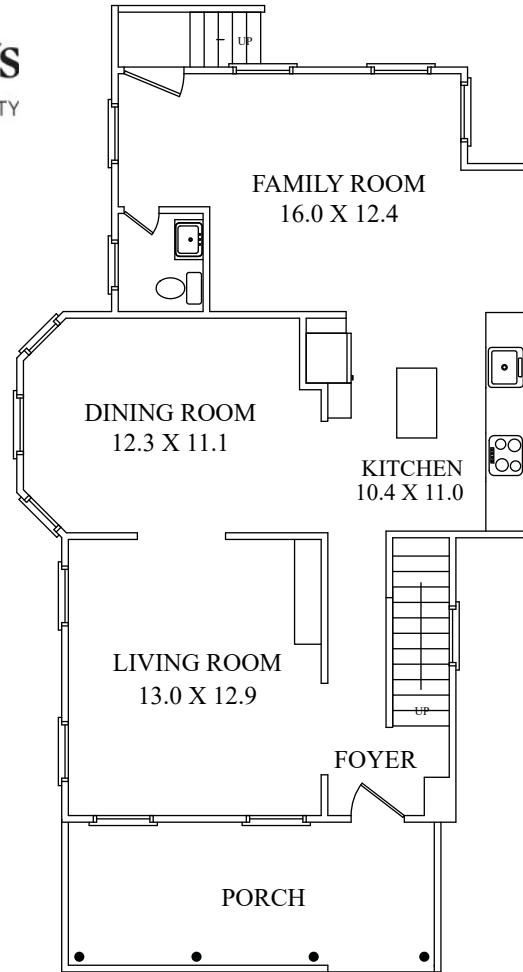


THE FLOOR PLAN

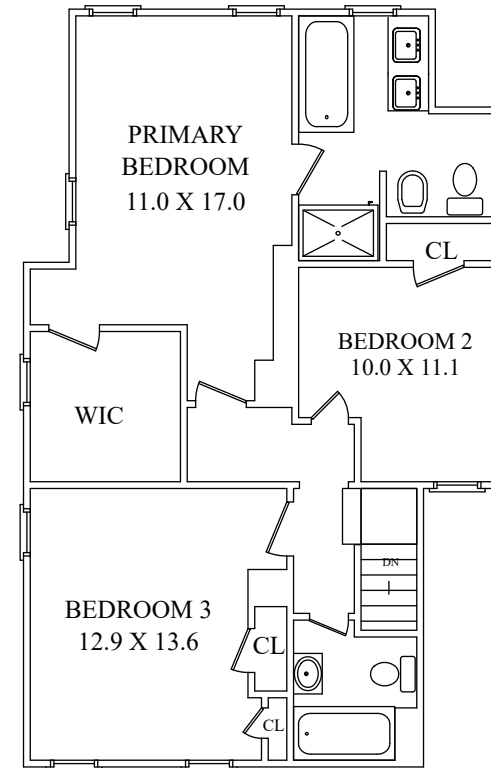
67 Division Avenue

New Providence, New Jersey

Prominent Properties | **Sotheby's**
INTERNATIONAL REALTY



FIRST FLOOR



SECOND FLOOR



KIM CANNON

Broker Associate

Kim Cannon & Co

c 908.313.2855 | kim.cannon@sothebysrealty.com

kimcannon.com



309 Springfield Avenue, Summit, NJ 07901 | o 908.273.8808 | prominentproperties.com



All Information deemed reliable but not guaranteed. Plans provided for illustration purposes only and are not to scale. Each Franchise Is Independently Owned And Operated.

Sotheby's International Realty® and the Sotheby's International Realty Logo are service marks licensed to Sotheby's International Realty Affiliates LLC and used with permission. NRK of New Jersey, Inc. d/b/a Prominent Properties Sotheby's International Realty fully supports the principles of the Fair Housing Act and the Equal Opportunity Act. Each franchise is independently owned and operated. Any services or products provided by independently owned and operated franchisees are not provided by, affiliated with or related to Sotheby's International Realty Affiliates LLC nor any of its affiliated companies. If your property is listed with a real estate broker, please disregard. It is not our intention to solicit the offerings of other real estate brokers. We are happy to work with them and cooperate fully.